

54 Violoncello

54 Violone

58 Vc., Violone

p *f*

63

67 Violoncello

67 Violone

70

70

73 Vc., Violone

2. Adagio e staccato

p

10

19

f *p*

Bassi

26

3. Vc. unis.

13

23 Violoncello

35 Vc., Violone

43

51

58

65

72

77

84

97 Violoncello

97 Violone

This system contains two staves. The upper staff is for Violoncello and the lower staff is for Violone. Both parts play a rhythmic pattern of eighth notes in a descending sequence.

95 Vc., Violone

95 Vc., Violone

This system contains a single staff for both Violoncello and Violone. The music consists of a steady eighth-note pattern.

702 Violoncello

702 Violone

This system contains two staves. The upper staff is for Violoncello and the lower staff is for Violone. The music concludes with a final note and a repeat sign.

Fine

4. Andante

Vc., Violone ^{ob. I}

1

This system contains two staves. The upper staff is for Violoncello and Violone, and the lower staff is for Oboe I. The music is in a 3/4 time signature and features a melodic line with some grace notes.

6

6

This system contains two staves. The upper staff is for Violoncello and Violone, and the lower staff is for Oboe I. The music continues with a similar melodic line.

11

11

1

This system contains two staves. The upper staff is for Violoncello and Violone, and the lower staff is for Oboe I. A first ending bracket is shown above the final measure.

16

16

This system contains two staves. The upper staff is for Violoncello and Violone, and the lower staff is for Oboe I. The music continues with a similar melodic line.

21

21

This system contains two staves. The upper staff is for Violoncello and Violone, and the lower staff is for Oboe I. The music continues with a similar melodic line.

25

25

This system contains two staves. The upper staff is for Violoncello and Violone, and the lower staff is for Oboe I. The music concludes with a final note.

Nr. 3 da capo

6

Bassi
3 fois

5.



72 Violoncello Cor. I

72 Violone

Musical staves for Violoncello, Violone, and Cor. I, measures 72-79. The Violoncello and Violone parts are in bass clef, while the Cor. I part is in treble clef. The Violoncello and Violone parts have a 3/8 time signature. The Cor. I part has a 3/8 time signature. The staves are connected by a brace on the left. A double bar line is present at measure 75.

26 Vc. Violone



35 Cor. I

Musical staff for Cor. I, measures 35-47. The staff is in bass clef with a key signature of one flat (B-flat). The melody consists of eighth and sixteenth notes. A 3/8 time signature is present at measure 43. The staff ends with the word "Fine".

47

Musical staff, measures 47-59. The staff is in bass clef with a key signature of one flat (B-flat). The melody consists of eighth and sixteenth notes. A sharp sign is present at measure 51.

59

Musical staff, measures 59-71. The staff is in bass clef with a key signature of one flat (B-flat). The melody consists of eighth and sixteenth notes. A sharp sign is present at measure 63.

71

Musical staff, measures 71-79. The staff is in bass clef with a key signature of one flat (B-flat). The melody consists of eighth and sixteenth notes. A sharp sign is present at measure 75. The staff ends with the words "da capo".

6. Air

3 fois



7

Musical staff, measures 7-12. The staff is in bass clef with a key signature of one flat (B-flat). The melody consists of eighth and sixteenth notes. A sharp sign is present at measure 8. A double bar line is present at measure 10.

12

Musical staff, measures 12-19. The staff is in bass clef with a key signature of one flat (B-flat). The melody consists of eighth and sixteenth notes.

19

Musical staff, measures 19-26. The staff is in bass clef with a key signature of one flat (B-flat). The melody consists of eighth and sixteenth notes. A double bar line is present at measure 19.

25

31

7. Minuet

Cor. I

3 fois

Cor. I

12

17

25

33

41

49

57

65

8. Bourrée

3 times

9

15

seconda volta: tacet

Bassi

9. Hornpipe

3 times



10. Ob. I

Ob. I

seconda volta: tacet



47 

48 

51 

54 

59 

62 

Adagio

Suite II in D-Dur

II.

Cor. I



7 

12 

20 

25 

Bassi

33

38

42

45

Adagio

12. Alla Hornpipe

7

15 Cor. I

27

1

27

3

35

Fine

40

46

57

57

63

69

da capo

13. Minuet

9

17

14. Lentement

10

Fine

19

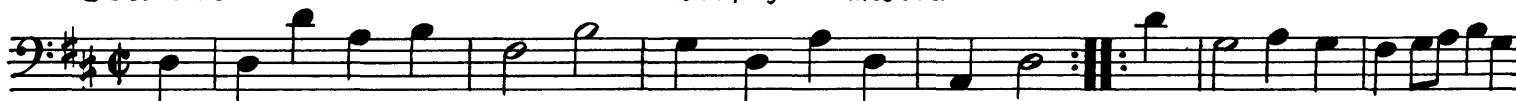
28

da capo

Bassi

15. Bourrée

This Air to be played 3 times over

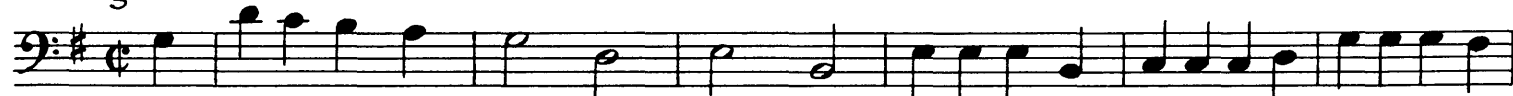


Suite III in G-Dur

16.



17. Rigaudon



Bassi

20.



9



Fine

17



25



da capo

21.



5



22.



5

